

2019 Final Ranking (record-based*): #1

Coach	Ed Orgeron		
Record	Power	Scoring Offense*	Scoring Defense*
15-0	39.3 (#2)	54.1 (#3)	14.8 (#13)

2020 Record Projection & Preseason Ratings**

Coach	Ed Orgeron	Offense Cluster	Defense Cluster
Record	Power	Scoring Offense*	Scoring Defense*
7-3	17.5 (#10)	38.1 (#8)	20.6 (#11)
		Balanced	4-3 Matchup
			← national rank shift
			[76 active FBS teams]

2019 Schedule & Results

Date	Opponent	Score (OT)
31-Aug-19	Georgia Southern	W 55-3
07-Sep-19	@ Texas	W 45-38
14-Sep-19	Northwestern State	W 65-14
21-Sep-19	@ Vanderbilt	W 66-38
05-Oct-19	Utah State	W 42-6
12-Oct-19	Florida	W 42-28
19-Oct-19	@ Mississippi State	W 36-13
26-Oct-19	Auburn	W 23-20
09-Nov-19	@ Alabama	W 46-41
16-Nov-19	@ Ole Miss	W 58-37
23-Nov-19	Arkansas	W 56-20
30-Nov-19	Texas A&M	W 50-7
07-Dec-19	vs Georgia	W 37-10
28-Dec-19	vs Oklahoma	W 63-28
13-Jan-20	vs Clemson	W 42-25

2020 Schedule & Predictions

Date	Opponent	Score*	Win %
26-Sep-20	#56 Mississippi State	39-22	86%
03-Oct-20	@ #75 Vanderbilt	40-16	93%
10-Oct-20	#41 Missouri	36-23	79%
17-Oct-20	@ #12 Florida	29-30	47%
24-Oct-20	#32 South Carolina	36-25	75%
31-Oct-20	@ #6 Auburn	28-34	35%
14-Nov-20	#2 Alabama	28-33	37%
21-Nov-20	@ #71 Arkansas	38-22	84%
28-Nov-20	@ #9 Texas A&M	29-32	42%
05-Dec-20	#24 Mississippi	37-27	73%

Win Distribution

0	0%
1	1%
2	2%
3	4%
4	8%
5	14%
6	18%
7	20%
8	17%
9	11%
10	4%

*adjusted for strength of schedule † tie in division standings or national rankings
 **median of 100,000 season simulations ‡ weighted by production, coach responsibility

Postseason

Postseason	Probability	Odds
College Football Playoff	17.0%	+489
CFP Final Top 25	78.6%	-367
SEC Champion	6.5%	+1448
SEC Championship Game	15.8%	+533

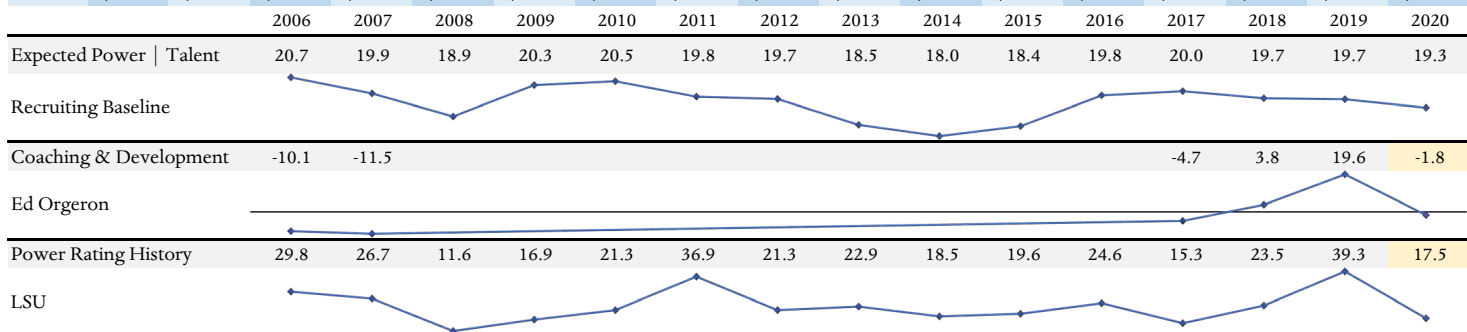
National Schedule Rankings

Avg. Game Difficulty	#11	Total Offense	19% (#76)
Avg. Opponent Offense	#13	Total Defense	42% (#70)
Avg. Opponent Defense	#12	Special Teams	89% (#12)
Avg. Opponent Coaching	#10	Coaching Staff	80% (#42)

2019 to 2020 Continuity‡

Over/Under Matrix - Expected Return on \$10

↑Over	+130	+125	+120	+115	+110	+105	Even	-105	-110	-115	-120	-125	-130	-135	-140	-145	-150
Under↓	-150	-145	-140	-135	-130	-125	-120	-115	-110	-105	Even	+105	+110	+115	+120	+125	+130
0.5	↑\$22.98	↑\$22.48	↑\$21.98	↑\$21.48	↑\$20.99	↑\$20.49	↑\$19.99	↑\$19.51	↑\$19.08	↑\$18.68	↑\$18.32	↑\$17.99	↑\$17.68	↑\$17.40	↑\$17.13	↑\$16.88	↑\$16.66
1	↑\$22.91	↑\$22.41	↑\$21.91	↑\$21.42	↑\$20.92	↑\$20.42	↑\$19.93	↑\$19.45	↑\$19.02	↑\$18.63	↑\$18.27	↑\$17.94	↑\$17.63	↑\$17.35	↑\$17.09	↑\$16.84	↑\$16.62
1.5	↑\$22.85	↑\$22.35	↑\$21.85	↑\$21.36	↑\$20.86	↑\$20.36	↑\$19.87	↑\$19.39	↑\$18.96	↑\$18.57	↑\$18.21	↑\$17.88	↑\$17.57	↑\$17.29	↑\$17.03	↑\$16.78	↑\$16.56
2	↑\$22.61	↑\$22.12	↑\$21.63	↑\$21.14	↑\$20.66	↑\$20.17	↑\$19.68	↑\$19.22	↑\$18.80	↑\$18.41	↑\$18.06	↑\$17.73	↑\$17.43	↑\$17.15	↑\$16.90	↑\$16.66	↑\$16.43
2.5	↑\$22.42	↑\$21.93	↑\$21.45	↑\$20.96	↑\$20.47	↑\$19.99	↑\$19.50	↑\$19.03	↑\$18.61	↑\$18.23	↑\$17.87	↑\$17.55	↑\$17.25	↑\$16.97	↑\$16.71	↑\$16.47	↑\$16.25
3	↑\$21.86	↑\$21.39	↑\$20.93	↑\$20.46	↑\$20.00	↑\$19.53	↑\$19.06	↑\$18.62	↑\$18.22	↑\$17.85	↑\$17.51	↑\$17.20	↑\$16.91	↑\$16.65	↑\$16.40	↑\$16.17	↑\$15.96
3.5	↑\$21.43	↑\$20.96	↑\$20.50	↑\$20.03	↑\$19.56	↑\$19.10	↑\$18.63	↑\$18.19	↑\$17.79	↑\$17.42	↑\$17.08	↑\$16.77	↑\$16.48	↑\$16.22	↑\$15.97	↑\$15.74	↑\$15.53
4	↑\$20.33	↑\$19.91	↑\$19.49	↑\$19.06	↑\$18.64	↑\$18.22	↑\$17.79	↑\$17.39	↑\$17.02	↑\$16.69	↑\$16.38	↑\$16.10	↑\$15.84	↑\$15.59	↑\$15.37	↑\$15.16	↑\$14.97
4.5	↑\$19.49	↑\$19.07	↑\$18.65	↑\$18.22	↑\$17.80	↑\$17.37	↑\$16.95	↑\$16.55	↑\$16.18	↑\$15.85	↑\$15.54	↑\$15.26	↑\$14.99	↑\$14.75	↑\$14.53	↑\$14.32	↑\$14.13
5	↑\$17.71	↑\$17.35	↑\$17.00	↑\$16.64	↑\$16.29	↑\$15.93	↑\$15.58	↑\$15.24	↑\$14.93	↑\$14.65	↑\$14.39	↑\$14.16	↑\$13.94	↑\$13.74	↑\$13.55	↑\$13.37	↑\$13.21
5.5	↑\$16.34	↑\$15.98	↑\$15.63	↑\$15.27	↑\$14.92	↑\$14.56	↑\$14.21	↑\$13.87	↑\$13.56	↑\$13.28	↑\$13.02	↑\$12.79	↑\$12.57	↑\$12.36	↑\$12.18	↑\$12.00	↑\$11.84
6	↑\$13.97	↑\$13.70	↑\$13.44	↑\$13.17	↑\$12.91	↑\$12.65	↑\$12.38	↑\$12.13	↑\$11.90	↑\$11.69	↑\$11.50	↑\$11.33	↑\$11.16	↑\$11.01	↑\$10.87	↑\$10.74	↑\$10.62
6.5	↑\$12.14	↑\$11.88	↑\$11.61	↑\$11.35	↑\$11.09	↑\$10.82	↑\$10.56	↑\$10.31	↑\$10.08	↑\$9.87	↑\$9.68	↓\$9.68	↓\$9.91	↓\$10.15	↓\$10.39	↓\$10.62	↓\$10.86
7	↓\$9.87	↓\$9.97	↓\$10.09	↓\$10.22	↓\$10.35	↓\$10.50	↓\$10.65	↓\$10.82	↓\$11.01	↓\$11.21	↓\$11.44	↓\$11.68	↓\$11.91	↓\$12.15	↓\$12.38	↓\$12.62	↓\$12.86
7.5	↓\$11.20	↓\$11.35	↓\$11.52	↓\$11.70	↓\$11.89	↓\$12.09	↓\$12.32	↓\$12.56	↓\$12.83	↓\$13.12	↓\$13.44	↓\$13.77	↓\$14.11	↓\$14.45	↓\$14.78	↓\$15.12	↓\$15.45
8	↓\$12.93	↓\$13.08	↓\$13.25	↓\$13.42	↓\$13.61	↓\$13.82	↓\$14.05	↓\$14.29	↓\$14.55	↓\$14.85	↓\$15.17	↓\$15.50	↓\$15.84	↓\$16.17	↓\$16.51	↓\$16.84	↓\$17.18
8.5	↓\$14.08	↓\$14.27	↓\$14.48	↓\$14.70	↓\$14.94	↓\$15.20	↓\$15.48	↓\$15.79	↓\$16.12	↓\$16.49	↓\$16.89	↓\$17.31	↓\$17.74	↓\$18.16	↓\$18.58	↓\$19.00	↓\$19.43
9	↓\$15.19	↓\$15.38	↓\$15.59	↓\$15.82	↓\$16.06	↓\$16.32	↓\$16.60	↓\$16.90	↓\$17.24	↓\$17.60	↓\$18.01	↓\$18.43	↓\$18.85	↓\$19.27	↓\$19.69	↓\$20.12	↓\$20.54
9.5	↓\$15.93	↓\$16.15	↓\$16.39	↓\$16.64	↓\$16.91	↓\$17.21	↓\$17.52	↓\$17.87	↓\$18.25	↓\$18.66	↓\$19.12	↓\$19.60	↓\$20.07	↓\$20.55	↓\$21.03	↓\$21.51	↓\$21.99
10	↓\$16.37	↓\$16.59	↓\$16.83	↓\$17.08	↓\$17.35	↓\$17.65	↓\$17.97	↓\$18.31	↓\$18.69	↓\$19.10	↓\$19.56	↓\$20.04	↓\$20.51	↓\$20.99	↓\$21.47	↓\$21.95	↓\$22.43
10.5	↓\$16.67	↓\$16.90	↓\$17.14	↓\$17.41	↓\$17.69	↓\$18.00	↓\$18.33	↓\$18.70	↓\$19.09	↓\$19.52	↓\$20.00	↓\$20.50	↓\$21.00	↓\$21.50	↓\$22.00	↓\$22.50	↓\$23.00
11	↓\$16.67	↓\$16.90	↓\$17.14	↓\$17.41	↓\$17.69	↓\$18.00	↓\$18.33	↓\$18.70	↓\$19.09	↓\$19.52	↓\$20.00	↓\$20.50	↓\$21.00	↓\$21.50	↓\$22.00	↓\$22.50	↓\$23.00
11.5	↓\$16.67	↓\$16.90	↓\$17.14	↓\$17.41	↓\$17.69	↓\$18.00	↓\$18.33	↓\$18.70	↓\$19.09	↓\$19.52	↓\$20.00	↓\$20.50	↓\$21.00	↓\$21.50	↓\$22.00	↓\$22.50	↓\$23.00



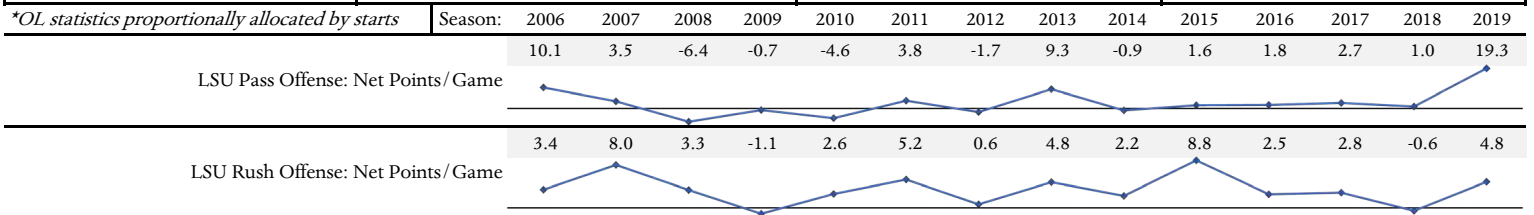
	Ratings & Grades [‡]	Prominent Teams	Weighted Experience [‡]	HC	OC	DC	ST	POS
2020 Coaching Staff	Coaching Efficiency: 53.2% FBS Experience: 64 Composite Grade: 86 Letter Grade: A	LSU Nebraska Ole Miss Utah State	37% 33% 10% 7%	✓ ✓ ✓	✓	✓ ✓	✓ ✓	✓ ✓ ✓
HC: Ed Orgeron	Coaching Efficiency: 52.1% FBS Experience: 95 Composite Grade: 52 Letter Grade: C+	LSU Ole Miss USC Tennessee	53% 32% 14% 1%	✓ ✓		✓ ✓		✓ ✓ ✓
OC/QB: Steve Ensminger	Coaching Efficiency: 55.8% FBS Experience: 57 Composite Grade: 83 Letter Grade: A-	LSU Auburn	96% 4%		✓			✓ ✓
WR: Mickey Joseph	Coaching Efficiency: 59.7% FBS Experience: 27 Composite Grade: 95 Letter Grade: A+	LSU Louisiana Tech	80% 20%					✓ ✓
RB: Kevin Faulk	Coaching Efficiency: -- FBS Experience: 0 Composite Grade: -- Letter Grade: --							
OL: James Cregg	Coaching Efficiency: 49.3% FBS Experience: 51 Composite Grade: 42 Letter Grade: C	USC LSU Idaho Tennessee	48% 27% 13% 12%					✓ ✓ ✓ ✓
DC/LB: Bo Pelini	Coaching Efficiency: 54.7% FBS Experience: 95 Composite Grade: 95 Letter Grade: A+	Nebraska LSU	88% 12%	✓		✓		
DL: Bill Johnson	Coaching Efficiency: 53.8% FBS Experience: 3 Composite Grade: 57 Letter Grade: B-	LSU	100%					✓
DB: Bill Busch	Coaching Efficiency: 49.9% FBS Experience: 81 Composite Grade: 44 Letter Grade: C	Utah State Nebraska Rutgers LSU	41% 23% 14% 13%			✓ ✓	✓ ✓	✓ ✓ ✓ ✓
DB: Corey Raymond	Coaching Efficiency: 55.2% FBS Experience: 68 Composite Grade: 93 Letter Grade: A+	LSU Utah State Nebraska	71% 20% 9%					✓ ✓ ✓
ST: Greg McMahon	Coaching Efficiency: 53.0% FBS Experience: 17 Composite Grade: 65 Letter Grade: B	LSU East Carolina	65% 35%				✓ ✓	✓ ✓
AC: Scott Linehan	Coaching Efficiency: -- FBS Experience: 0 Composite Grade: -- Letter Grade: --							

[‡] weighted by games coached, responsibility level, & impact on score

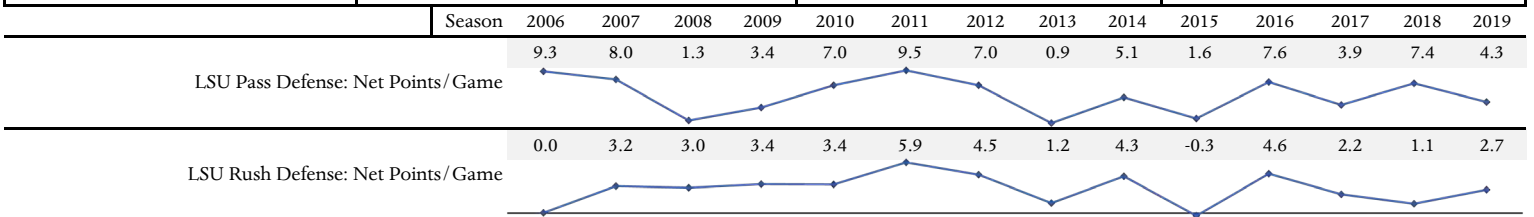
Ed Orgeron FBS Coaching Network (2005 – 2019)

Coach	2020 (FBS)	WGT [‡]	Coach	2020 (FBS)	WGT [‡]	Coach	2020 (FBS)	WGT [‡]
Lane Kiffin	HC: MISS	18%	Dan Werner	--	3%	John Baxter	--	1%
Les Miles	HC: KAN	6%	Chris Rippon	--	2%	Jeff Grimes	OC: BYU	1%
Clay Helton	HC: USC	6%	Jim Chaney	OC: TENN	2%	Mickey Joseph	WR: LSU	1%
Dave Aranda	HC: BAY	5%	Tommie Robinson	RB: TAM	2%	Kevin Steele	DC: AUB	1%
Monte Kiffin	--	5%	Matt Canada	--	2%	Bradley Dale Peveto	--	1%
Steve Ensminger	OC/QB: LSU	5%	Willie Mack Garza	--	2%	John Thompson	--	1%
Kennedy Polamalu	--	4%	Noel Mazzone	OC/QB: AZ	2%	Tee Martin	WR: TENN	1%
James Cregg	OL: LSU	4%	Frank Wilson (1)	--	2%	Art Kehoe	--	1%
Cam Cameron	--	3%	Bill Busch	DB: LSU	2%	Joe Barry	--	1%
Corey Raymond	DB: LSU	3%	Clancy Pendergast	--	1%	Eddie Gran	RB: KY	1%

Unit / Player <i>(eligible transfer)</i> <i>unavailable in 2020</i>	TOTAL OFFENSE [per team game]					PASS OFFENSE [incl. sacks]					RUSH OFFENSE [excl. sacks]				
	Grade	WGT	EFF	Pctile	Net Points ±	WGT	EFF	Pctile	Net Points ±	WGT	EFF	Pctile	Net Points ±		
LSU: 2019 QB	A+	34%	69%	100	20.6 9.4	44%	68%	99	17.6 8.3	14%	74%	97	3.0 1.0		
LSU: 2019 RB	A	18%	52%	85	8.2 7.6	6%	44%	73	1.4 1.8	44%	54%	86	6.8 5.8		
LSU: 2019 WR	A+	22%	72%	100	13.6 5.2	32%	72%	100	13.5 5.2	0%	76%	80	0.1 0.0		
LSU: 2019 OL*	A	21%	58%	91	10.6 7.8	13%	58%	83	4.6 3.4	37%	58%	90	6.0 4.4		
LSU: 2019 TE/FB	A	5%	61%	92	2.7 1.7	5%	62%	88	1.9 1.1	5%	58%	89	0.8 0.6		
<i>QB Joe Burrow</i>	<i>A+</i>	<i>32%</i>	<i>70%</i>	<i>100</i>	<i>19.4</i> <i>8.2</i>	<i>41%</i>	<i>69%</i>	<i>100</i>	<i>16.6</i> <i>7.3</i>	<i>13%</i>	<i>76%</i>	<i>97</i>	<i>2.8</i> <i>0.9</i>		
<i>RB Clyde Edwards-Helaire</i>	<i>A+</i>	<i>12%</i>	<i>58%</i>	<i>94</i>	<i>5.9</i> <i>4.3</i>	<i>4%</i>	<i>50%</i>	<i>88</i>	<i>1.1</i> <i>1.1</i>	<i>28%</i>	<i>60%</i>	<i>94</i>	<i>4.8</i> <i>3.3</i>		
<i>WR Ja'Marr Chase</i>	<i>A+</i>	<i>8%</i>	<i>73%</i>	<i>98</i>	<i>5.1</i> <i>1.9</i>	<i>12%</i>	<i>73%</i>	<i>98</i>	<i>5.0</i> <i>1.9</i>	<i>0%</i>	<i>100%</i>	<i>74</i>	<i>0.1</i> <i>0.0</i>		
<i>WR Justin Jefferson</i>	<i>A+</i>	<i>7%</i>	<i>76%</i>	<i>99</i>	<i>4.6</i> <i>1.4</i>	<i>10%</i>	<i>76%</i>	<i>99</i>	<i>4.6</i> <i>1.4</i>	<i>0%</i>	<i>0%</i>	<i>0</i>	<i>0.0</i> <i>0.0</i>		
<i>OL Adrian Magee*</i>	<i>B+</i>	<i>4%</i>	<i>57%</i>	<i>71</i>	<i>2.1</i> <i>1.6</i>	<i>3%</i>	<i>57%</i>	<i>67</i>	<i>0.9</i> <i>0.7</i>	<i>7%</i>	<i>58%</i>	<i>71</i>	<i>1.2</i> <i>0.9</i>		
<i>C Lloyd Cushenberry III*</i>	<i>B+</i>	<i>4%</i>	<i>57%</i>	<i>71</i>	<i>2.1</i> <i>1.6</i>	<i>3%</i>	<i>57%</i>	<i>67</i>	<i>0.9</i> <i>0.7</i>	<i>7%</i>	<i>58%</i>	<i>71</i>	<i>1.2</i> <i>0.9</i>		
<i>OG Damien Lewis*</i>	<i>B+</i>	<i>4%</i>	<i>57%</i>	<i>71</i>	<i>2.1</i> <i>1.6</i>	<i>3%</i>	<i>57%</i>	<i>67</i>	<i>0.9</i> <i>0.7</i>	<i>7%</i>	<i>58%</i>	<i>71</i>	<i>1.2</i> <i>0.9</i>		
OL Austin Deculus*	B+	4%	57%	70	1.8 1.3	2%	57%	65	0.8 0.6	6%	58%	69	1.0 0.8		
RB Tyrion Davis-Price	C+	2%	42%	45	0.9 1.2	1%	40%	55	0.1 0.2	6%	42%	43	0.8 1.0		
WR Terrace Marshall Jr.	A	3%	71%	88	2.1 0.9	5%	71%	89	2.1 0.9	0%	0%	0	0.0 0.0		
<i>TE Thaddeus Moss</i>	<i>A</i>	<i>4%</i>	<i>62%</i>	<i>91</i>	<i>2.2</i> <i>1.3</i>	<i>4%</i>	<i>65%</i>	<i>89</i>	<i>1.5</i> <i>0.8</i>	<i>5%</i>	<i>58%</i>	<i>86</i>	<i>0.7</i> <i>0.5</i>		
RB John Emery Jr.	B-	2%	47%	55	0.8 0.9	1%	27%	37	0.1 0.3	4%	54%	63	0.7 0.6		
<i>OT Saahdiq Charles*</i>	<i>B</i>	<i>3%</i>	<i>57%</i>	<i>66</i>	<i>1.3</i> <i>0.9</i>	<i>2%</i>	<i>57%</i>	<i>62</i>	<i>0.5</i> <i>0.4</i>	<i>4%</i>	<i>58%</i>	<i>66</i>	<i>0.7</i> <i>0.5</i>		
RB Chris Curry	C	1%	36%	39	0.4 0.7	0%	23%	44	0.0 0.1	4%	38%	38	0.4 0.7		
QB Myles Brennan	C+	3%	51%	48	1.2 1.2	4%	51%	52	1.1 1.0	1%	45%	43	0.1 0.1		
WR Racey McMath	A-	1%	81%	82	0.9 0.2	2%	81%	82	0.9 0.2	0%	0%	0	0.0 0.0		
<i>WR Derrick Dillon</i>	<i>B</i>	<i>1%</i>	<i>61%</i>	<i>61</i>	<i>0.6</i> <i>0.4</i>	<i>2%</i>	<i>61%</i>	<i>61</i>	<i>0.6</i> <i>0.4</i>	<i>0%</i>	<i>0%</i>	<i>0</i>	<i>0.0</i> <i>0.0</i>		
<i>OT Badara Traore*</i>	<i>B-</i>	<i>1%</i>	<i>57%</i>	<i>57</i>	<i>0.4</i> <i>0.3</i>	<i>1%</i>	<i>57%</i>	<i>56</i>	<i>0.2</i> <i>0.1</i>	<i>1%</i>	<i>58%</i>	<i>57</i>	<i>0.2</i> <i>0.2</i>		
OT Dare Rosenthal*	B-	1%	57%	57	0.4 0.3	1%	57%	56	0.2 0.1	1%	58%	57	0.2 0.2		
<i>RB Lanard Fournette</i>	<i>C</i>	<i>1%</i>	<i>34%</i>	<i>44</i>	<i>0.2</i> <i>0.3</i>	<i>0%</i>	<i>28%</i>	<i>46</i>	<i>0.0</i> <i>0.1</i>	<i>1%</i>	<i>37%</i>	<i>45</i>	<i>0.1</i> <i>0.2</i>		
OG Ed Ingram*	B-	1%	57%	55	0.3 0.2	0%	57%	54	0.1 0.1	1%	58%	55	0.2 0.1		
<i>TE Stephen Sullivan</i>	<i>B+</i>	<i>1%</i>	<i>66%</i>	<i>75</i>	<i>0.4</i> <i>0.2</i>	<i>1%</i>	<i>67%</i>	<i>75</i>	<i>0.4</i> <i>0.2</i>	<i>0%</i>	<i>58%</i>	<i>59</i>	<i>0.1</i> <i>0.0</i>		

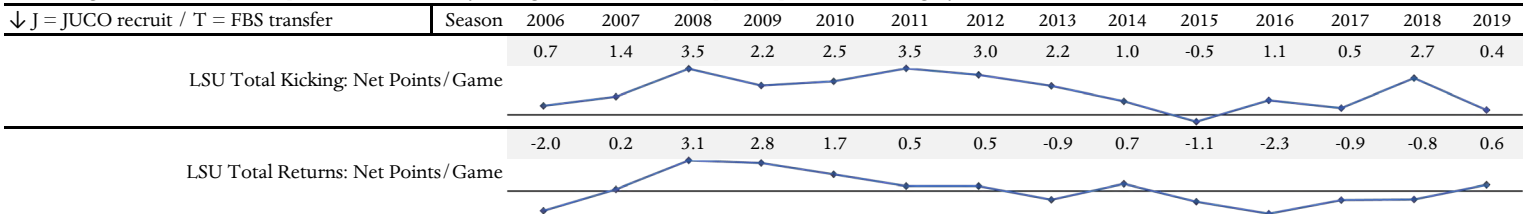


Player / Unit	(eligible transfer) <i>unavailable in 2020</i>	TOTAL DEFENSE					PASS DEFENSE [incl. sacks]					RUSH DEFENSE [excl. sacks]				
		Grade	WGT	EFF	Pctile	Net Points ±	WGT	EFF	Pctile	Net Points ±	WGT	EFF	Pctile	Net Points ±		
LSU: 2019 DL		B	14%	54%	63	4.3 3.7	7%	48%	48	1.4 1.5	31%	57%	71	2.9 2.2		
LSU: 2019 LB		C+	30%	50%	50	8.5 8.3	28%	45%	31	4.9 6.1	34%	61%	82	3.5 2.2		
LSU: 2019 DB		A	56%	60%	91	18.8 12.6	65%	61%	93	15.6 10.0	35%	56%	68	3.3 2.6		
CB Derek Stingley Jr.		A	10%	69%	89	4.0 1.8	13%	71%	92	3.7 1.5	4%	55%	54	0.4 0.3		
S JaCoby Stevens		B+	11%	59%	71	3.5 2.4	12%	57%	68	2.7 2.0	7%	68%	77	0.8 0.4		
<i>S Kary Vincent Jr.</i>		<i>A-</i>	<i>9%</i>	<i>66%</i>	<i>82</i>	3.3 1.7	<i>11%</i>	<i>68%</i>	<i>86</i>	2.9 1.4	<i>4%</i>	<i>57%</i>	<i>57</i>	0.4 0.3		
<i>S Grant Delpit</i>		<i>B+</i>	<i>8%</i>	<i>61%</i>	<i>72</i>	2.9 1.9	<i>9%</i>	<i>59%</i>	<i>70</i>	2.2 1.5	<i>6%</i>	<i>66%</i>	<i>73</i>	0.7 0.4		
<i>CB Kristian Fulton</i>		<i>B+</i>	<i>8%</i>	<i>61%</i>	<i>71</i>	2.6 1.7	<i>9%</i>	<i>62%</i>	<i>75</i>	2.2 1.4	<i>4%</i>	<i>55%</i>	<i>54</i>	0.4 0.3		
<i>LB Jacob Phillips</i>		<i>C-</i>	<i>6%</i>	<i>41%</i>	<i>30</i>	1.5 2.1	<i>6%</i>	<i>22%</i>	<i>10</i>	0.5 1.7	<i>8%</i>	<i>71%</i>	<i>83</i>	1.0 0.4		
<i>LB Patrick Queen</i>		<i>B</i>	<i>7%</i>	<i>56%</i>	<i>63</i>	2.2 1.7	<i>7%</i>	<i>51%</i>	<i>51</i>	1.3 1.3	<i>8%</i>	<i>69%</i>	<i>79</i>	0.9 0.4		
<i>OLB K'Lavon Chaisson</i>		<i>B+</i>	<i>6%</i>	<i>62%</i>	<i>73</i>	2.2 1.4	<i>6%</i>	<i>58%</i>	<i>66</i>	1.4 1.0	<i>7%</i>	<i>69%</i>	<i>78</i>	0.8 0.4		
<i>DE Neil Farrell Jr.</i>		<i>B</i>	<i>3%</i>	<i>59%</i>	<i>64</i>	1.0 0.7	<i>2%</i>	<i>48%</i>	<i>48</i>	0.3 0.3	<i>6%</i>	<i>66%</i>	<i>72</i>	0.7 0.4		
<i>DL Rashard Lawrence</i>		<i>B+</i>	<i>3%</i>	<i>63%</i>	<i>70</i>	1.0 0.6	<i>2%</i>	<i>61%</i>	<i>68</i>	0.4 0.3	<i>5%</i>	<i>65%</i>	<i>68</i>	0.6 0.3		
NT Tyler Shelvin		C+	2%	51%	51	0.7 0.6	1%	36%	35	0.2 0.3	5%	60%	61	0.5 0.3		
<i>DL Breiden Fehoko</i>		<i>B-</i>	<i>2%</i>	<i>58%</i>	<i>60</i>	0.6 0.5	<i>1%</i>	<i>47%</i>	<i>48</i>	0.2 0.2	<i>5%</i>	<i>63%</i>	<i>65</i>	0.5 0.3		
<i>OLB Michael Divinity Jr.</i>		<i>C+</i>	<i>3%</i>	<i>50%</i>	<i>50</i>	0.7 0.7	<i>2%</i>	<i>48%</i>	<i>48</i>	0.4 0.5	<i>3%</i>	<i>54%</i>	<i>52</i>	0.3 0.3		
LB Damone Clark		C-	3%	39%	34	0.7 1.1	3%	38%	35	0.5 0.8	3%	42%	40	0.2 0.3		
LB Micah Baskerville		B-	2%	53%	53	0.7 0.6	2%	54%	54	0.4 0.3	3%	52%	50	0.3 0.2		
NT Siaki Ika		C	1%	43%	43	0.3 0.3	0%	16%	38	0.0 0.1	3%	48%	47	0.2 0.3		
CB Cordale Flott		C+	3%	48%	47	0.7 0.7	3%	51%	52	0.6 0.5	2%	39%	40	0.1 0.2		
DE Glen Logan		C+	2%	47%	46	0.4 0.5	1%	51%	52	0.2 0.2	3%	44%	43	0.2 0.3		
S Cameron Lewis		C+	2%	46%	46	0.6 0.7	2%	50%	50	0.4 0.4	2%	38%	38	0.1 0.2		
<i>DE Justin Thomas</i>		<i>C+</i>	<i>1%</i>	<i>45%</i>	<i>45</i>	0.2 0.3	<i>0%</i>	<i>52%</i>	<i>52</i>	0.1 0.1	<i>2%</i>	<i>41%</i>	<i>43</i>	0.1 0.2		
CB Jay Ward		B-	1%	60%	56	0.5 0.3	2%	62%	59	0.4 0.3	0%	41%	47	0.0 0.0		
<i>S Eric Monroe</i>		<i>C</i>	<i>1%</i>	<i>25%</i>	<i>38</i>	0.1 0.4	<i>1%</i>	<i>7%</i>	<i>38</i>	0.0 0.3	<i>1%</i>	<i>45%</i>	<i>46</i>	0.1 0.1		
OLB Andre Anthony		C+	1%	52%	51	0.4 0.4	1%	61%	58	0.3 0.2	1%	24%	37	0.0 0.1		
S Maurice Hampton Jr.		C	1%	36%	41	0.3 0.5	1%	38%	44	0.2 0.3	1%	32%	39	0.1 0.1		



Unit / Player <i>(eligible transfer)</i> <i>unavailable in 2020</i>	TOTAL KICKING [per team game]						PLACEKICKING [FG, KO, PAT]				PUNTING				
	Grade	WGT*	EFF	Pctile	Net Points ±		WGT*	EFF	Pctile	Net Points ±	WGT*	EFF	Pctile	Net Points ±	
LSU: 2019 K/P	B	48%	53%	67	3.1 2.7		31%	58%	75	2.2 1.6	17%	45%	35	0.9 1.1	
P Zach Von Rosenberg	C-	35%	45%	36	0.9 1.1		0%	0%	0	0.0 0.0	100%	45%	36	0.9 1.1	
PK Cade York	B	47%	56%	66	1.5 1.2		72%	56%	66	1.5 1.2	0%	0%	0	0.0 0.0	
PK Avery Atkins	B+	18%	63%	72	0.7 0.4		28%	63%	72	0.7 0.4	0%	0%	0	0.0 0.0	
Unit / Player <i>(eligible transfer)</i> <i>unavailable in 2020</i>	TOTAL RETURNS [per team game]						KICK RETURNS				PUNT RETURNS [all opp. punts]				
	Grade	WGT*	EFF	Pctile	Net Points ±		WGT*	EFF	Pctile	Net Points ±	WGT*	EFF	Pctile	Net Points ±	
LSU: 2019 KR/PR	B+	52%	55%	70	3.4 2.8		16%	58%	74	1.1 0.8	36%	54%	64	2.3 2.0	
CB Derek Stingley Jr.	C	52%	45%	37	1.5 1.8		0%	0%	0	0.0 0.0	75%	45%	37	1.5 1.8	
<i>RB Clyde Edwards-Helaire</i>	<i>C+</i>	<i>19%</i>	<i>48%</i>	<i>51</i>	0.6 0.6		<i>59%</i>	<i>48%</i>	<i>51</i>	0.6 0.6	<i>0%</i>	<i>0%</i>	<i>0</i>	0.0 0.0	
LB Micah Baskerville	A+	12%	100%	97	0.7 0.0		19%	100%	92	0.4 0.0	9%	100%	91	0.4 0.0	
WR Trey Palmer	B+	11%	64%	72	0.5 0.3		5%	37%	46	0.0 0.1	14%	68%	75	0.4 0.2	
FB Tory Carter	C	2%	28%	40	0.0 0.1		6%	28%	40	0.0 0.1	0%	0%	0	0.0 0.0	
<i>WR Justin Jefferson</i>	<i>B+</i>	<i>3%</i>	<i>86%</i>	<i>72</i>	0.2 0.0		<i>5%</i>	<i>100%</i>	<i>74</i>	0.1 0.0	<i>2%</i>	<i>67%</i>	<i>56</i>	0.0 0.0	

*Unit weight is relative to entire special teams total. Player weight is relative to that specific special teams category.



2020 Recruiting Class			2020 Roster: Career Impact* and Efficiency % [*per team game; experienced FBS players only]							
Rank	Top Recruits	Pctile	Order	Current Roster	EFF	Impact	Order	Current Roster	EFF	Impact
1	TE Arik Gilbert	99	1	CB Derek Stingley Jr.	60%	9.1	25	OLB Ray Thornton	36%	0.6
2	CB Elias Ricks	99	2	WR Ja'Marr Chase	70%	4.7	26	NT Siaki Ika	43%	0.6
3	WR Kayshon Boutte	99	3	OL Austin Deculus	53%	3.4	27	FB Tory Carter	47%	0.6
4	DT Jaquelin Roy	98	4	S JaCoby Stevens	62%	3.3	28	S Cameron Lewis	44%	0.5
5	LB Phillip Webb	98	5	PK Cade York	56%	2.7	29	WR Racey McMath	79%	0.4
6	S Jordan Toles	98	6	RB Tyrion Davis-Price	42%	2.1	30	WR Jontre Kirklín	27%	0.3
7	DE BJ Ojulari	98	7	WR Terrace Marshall Jr.	68%	2.1	31	WR Jaray Jenkins	55%	0.3
8	DT Jacobian Guillory	97	8	P Zach Von Rosenberg	66%	2.0	32	OG Chasen Hines	48%	0.3
9	LB Antoine Sambah	97	9	RB John Emery Jr.	47%	1.7	33	DL Joseph Evans	25%	0.2
10	OT Marcus Dumervil	97	10	OG Ed Ingram	53%	1.7	34	CB Lloyd Cole	18%	0.1
11	RB Kevontre Bradford	96	11	QB Myles Brennan	48%	1.5	35	DE Travez Moore	42%	0.1
12	LB Josh White	95	12	CB Cordale Flott	48%	1.4	36	WR Devonta Lee	61%	0.1
13	QB Max Johnson	91	13	LB Micah Baskerville	59%	1.4	37	DE TK McLendon	100%	0.1
14	DT Eric Taylor	90	14	PK Avery Atkins	70%	1.0				
15	CB Dwight McGlothern	90	15	LB Damone Clark	39%	1.0				
16	WR Koy Moore	89	16	WR Trey Palmer	49%	0.9				
17	CB Lorando Johnson	86	17	NT Tyler Shelvin	50%	0.9				
18	OG Marlon Martinez	86	18	DE Glen Logan	46%	0.9				
19	WR Alex Adams	84	19	S Todd Harris Jr.	49%	0.9				
20	TE Kole Taylor	84	20	CB Jay Ward	60%	0.8				
21	DE Ali Gaye - J	83	21	RB Chris Curry	30%	0.7				
22	OG Xavier Hill	82	22	OT Dare Rosenthal	57%	0.7				
23	QB TJ Finley	81	23	S Maurice Hampton Jr.	36%	0.7				
24	DT CamRon Jackson	76	24	OLB Andre Anthony	40%	0.7				

Current Record (W ≤ L)

Conditional Record Probabilities - Regular Season

[% chance of final regular season record, given current record]

Current Record (W > L)

↓	0-10	1-9	2-8	3-7	4-6	5-5	6-4	7-3	8-2	9-1	10-0	↓
0-1	→ 0.5%	→ 3%	→ 8%	→ 14%	→ 19%	→ 21%	→ 16%	→ 11%	→ 5%	→ 1%	100% ←	10-0
0-2	→ 4%	→ 16%	→ 24%	→ 21%	→ 19%	→ 9%	→ 6%	→ 2%	→ 0.4%	9% ←	91% ←	9-0
0-3	→ 10%	→ 27%	→ 29%	→ 20%	→ 10%	→ 4%	→ 1%	→ 0.1%	4% ←	36% ←	60% ←	8-0
0-4	→ 13%	→ 32%	→ 31%	→ 19%	→ 5%	→ 1%	→ 0.0%	1% ←	6% ←	36% ←	57% ←	7-0
0-5	→ 23%	→ 42%	→ 27%	→ 8%	→ 0.3%	→ 0.0%	0.5% ←	5% ←	23% ←	40% ←	32% ←	6-0
0-6	→ 25%	→ 43%	→ 26%	→ 6%	→ 0.0%	1% ←	5% ←	19% ←	30% ←	30% ←	15% ←	5-0
0-7	→ 27%	→ 43%	→ 25%	→ 4%	0.3% ←	2% ←	9% ←	21% ←	29% ←	26% ←	13% ←	4-0
0-8	→ 61%	→ 34%	→ 5%	1% ←	3% ←	9% ←	17% ←	24% ←	23% ←	16% ←	7% ←	3-0
0-9	→ 70%	→ 30%	0.4% ←	2% ←	6% ←	12% ←	19% ←	22% ←	20% ←	14% ←	5% ←	2-0
0-10	--	0.1% ←	1% ←	3% ←	7% ←	13% ←	19% ←	22% ←	19% ←	13% ←	5% ←	1-0
1-1		→ 2%	→ 6%	→ 13%	→ 20%	→ 22%	→ 18%	→ 12%	→ 6%	→ 1%		
1-2		→ 6%	→ 17%	→ 23%	→ 25%	→ 16%	→ 8%	→ 2%	→ 1%	100% ←		9-1
1-3		→ 9%	→ 23%	→ 27%	→ 25%	→ 12%	→ 4%	→ 1%	13% ←	87% ←		8-1
1-4		→ 19%	→ 37%	→ 28%	→ 13%	→ 3%	→ 0.4%	8% ←	43% ←	49% ←		7-1
1-5		→ 22%	→ 40%	→ 28%	→ 9%	→ 1%	1% ←	11% ←	43% ←	44% ←		6-1
1-6		→ 25%	→ 43%	→ 27%	→ 5%	1% ←	10% ←	31% ←	38% ←	20% ←		5-1
1-7		→ 57%	→ 37%	→ 6%	2% ←	11% ←	27% ←	31% ←	21% ←	7% ←		4-1
1-8		→ 64%	→ 36%	1% ←	6% ←	17% ←	27% ←	27% ←	17% ←	5% ←		3-1
1-9		→ 100%	2% ←	9% ←	17% ←	24% ←	23% ←	16% ←	7% ←	2% ←		2-1
2-2			→ 3%	→ 13%	→ 24%	→ 29%	→ 20%	→ 8%	→ 2%			
2-3			→ 9%	→ 28%	→ 34%	→ 20%	→ 7%	→ 1%	100% ←			8-2
2-4			→ 12%	→ 33%	→ 36%	→ 16%	→ 3%	18% ←	82% ←			7-2
2-5			→ 14%	→ 39%	→ 37%	→ 10%	13% ←	49% ←	38% ←			6-2
2-6			→ 47%	→ 45%	→ 8%	2% ←	18% ←	46% ←	34% ←			5-2
2-7			→ 55%	→ 45%	3% ←	17% ←	36% ←	32% ←	12% ←			4-2
2-8			→ 100%	5% ←	19% ←	33% ←	27% ←	13% ←	3% ←			3-2
3-3				→ 6%	→ 25%	→ 39%	→ 24%	→ 6%				
3-4				→ 9%	→ 32%	→ 43%	→ 16%	100% ←				7-3
3-5				→ 35%	→ 50%	→ 15%	24% ←	76% ←				6-3
3-6				→ 46%	→ 54%	19% ←	52% ←	29% ←				5-3
3-7				→ 100%	5% ←	25% ←	47% ←	24% ←				4-3
4-4					→ 27%	→ 53%	→ 21%					
4-5					→ 38%	→ 62%	100% ←					6-4
4-6					→ 100%	31% ←	69% ←					5-4
5-5						→ 100%						

0-10 1-9 2-8 3-7 4-6 5-5 6-4 7-3 8-2 9-1 10-0